



www.standardmodernlathes.com
Manufactured by Racer Machinery International Inc.
1-888-514-1661

CNC FLAT BED LATHE TOOLROOM SERIES



*MODEL SHOWN IS FOR ILLUSTRATION PURPOSES ONLY.
ACTUAL PRODUCT MAY VARY DUE TO PRODUCT ENHANCEMENT.

The CNC Flat Bed Lathe by Standard Modern have an established reputation throughout North America in toolrooms, workshops and schools across the continent.

Standard Modern lathes stand for:

- » Quality
- » Reliability
- » Versatility



FEATURES

- » HARDENED AND GROUND BEDWAYS
- » HAND SCRAPED SURFACES
- » POSITIVE HEADSTOCK TO BED "V" POSITIONING
- » HIGH PRECISION SPINDLE ROLLER BEARINGS
- » HEAVY DUTY CAMLOCK SPINDLE
- » HIGH PRECISION AND DYNAMICALLY BALANCED SPINDLE
- » HARD AND GROUND PRECISION "X" & "Z" BALL SCREWS
- » USER FRIENDLY HIGH PERFORMANCE CNC CONTROL
- » SHOP TURN PROGRAMMING



MACHINE	F-14TR	F-16TR
Swing Over Bed	14" (355mm)	17" (430mm)
Swing Over Cross-Slide	8" (200mm)	10" (250mm)
Distance Between Centers	40" (1016mm)	40"/60"/100" (1016mm/1500mm/2500mm)
Voltage	460 V / 3 Phase	460 V / 3 Phase

HEADSTOCK

Spindle Nose	D1-4	D1-6
Spindle Bore	1.575" (40mm)	2.06" (50.8mm)
Spindle Speed - 3 Range r.p.m	40-3000	40-2500
Spindle Drive	5 HP	10 HP (15 HP opt.)

AXIS

Cross-Slide Travel (X-Axis)	7"	8.5"
Longitudinal Travel (Z-Axis)	36" (914.4mm)	36"/56"/96" (915mm/1422mm/2440mm)
Positioning	.00025" (0.006mm)	.00025" (0.006mm)
Repeatability	.0002" (0.005mm)	.0002" (0.005mm)

TAILSTOCK

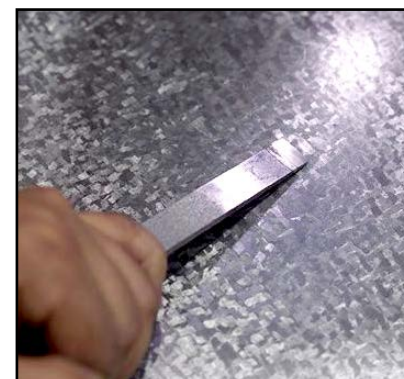
Quill Diameter	1.562" (40)	2.875" (73mm)
Quill Taper	#3 M. T	#4 M. T
Quill Stroke	4" (100mm)	6" (150mm)

SHIPPING DATA

Weight Net lbs./kg.	2400/1088	3250, 3900, 5600lbs/1475, 1790, 2540kgs
Weight Shipping lbs./kg.	2700/1224	3700, 4300, 6100lbs/1678, 1950,
Coolant Capacity	5gal.	10gal.



Siemens Control Panel



Hand Scraped Surfaces

STANDARD EQUIPMENT & CNC CONTROL

- » Automatic Lubrication
- » Heat Exchanger for the Electric Cabinet
- » Coolant System
- » Front Door Interlock
- » Work Light
- » Leveling Screws, Pads & Nuts
- » Splash Guard/ Chip Guard
- » 10.4 in. Colour TFT Display/ Opt. 15 in
- » Graphic CNC Simulation Plane Display
- » Wide Range of Turning Cycle for Standard Geometries
- » USB and RJ45 Interfaces on Operator Panel Front
- » Inch/Metric Operation

OPTIONAL ACCESSORIES

- » Pneumatic chuck 8" or 10"
- » Hydraulic System
- » Hydraulic Tool Change 8 positions
- » Hydraulic Chuck 8" or 10"
- » Electric Tool Change 4 Positions
- » Quick Change Tool Post
- » Indexing Tool Post
- » 3-Jaw Chuck
- » 4-Jaw Independent Chuck
- » Steady Rest 1/4-3" (6-76 mm)/ 6" (150 mm) Bronze or Roller
- » Follow Rest 1/4- 2 1/2" (6-63mm) Bronze or Roller
- » Follow Rest for F-16TR 6" Bronze or Roller
- » Standard Modern USB Memory Stick
- » Please Inquire About Any Other Options